

Political Geography

How people divide the world into
THEIR territories...

Political Geography



Claiming our Territory

DOGS

Humans

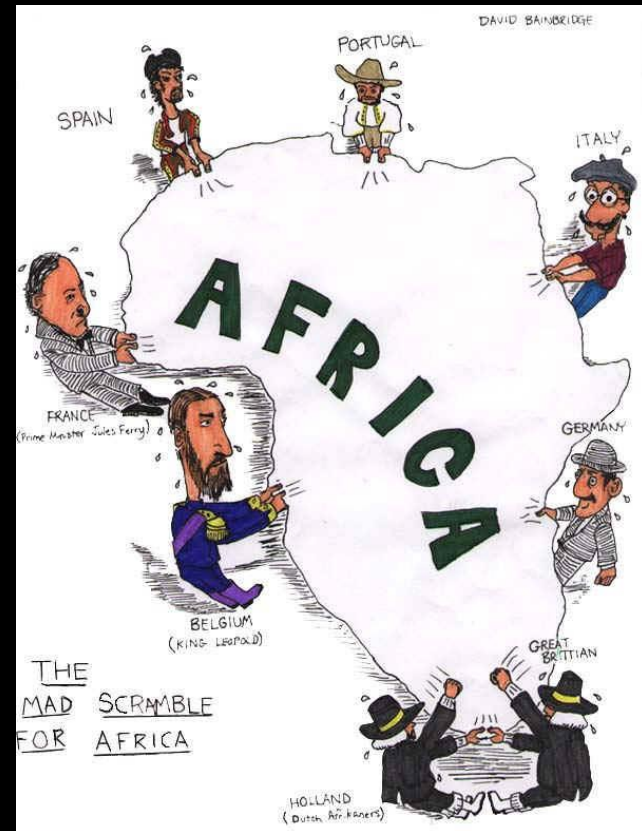




FIGURE 7-23 Ethnicities in Africa. The boundaries of modern African states do not match the territories long occupied by thousands of ethnic groups. State boundaries derive from the administrative units imposed by European colonial powers a century ago.

Day 2

Basic Definitions

- State

- A space with a permanent population, territorial boundaries recognized by other states, a government, and sovereignty.

- A synonym for STATE is COUNTRY

- Sovereignty

- A state has sovereignty if it has authority over its own political, social, and economic matters.

- In other words, a country can take care of its own “stuff” without anyone else messing with their “stuff.”

How

ates?



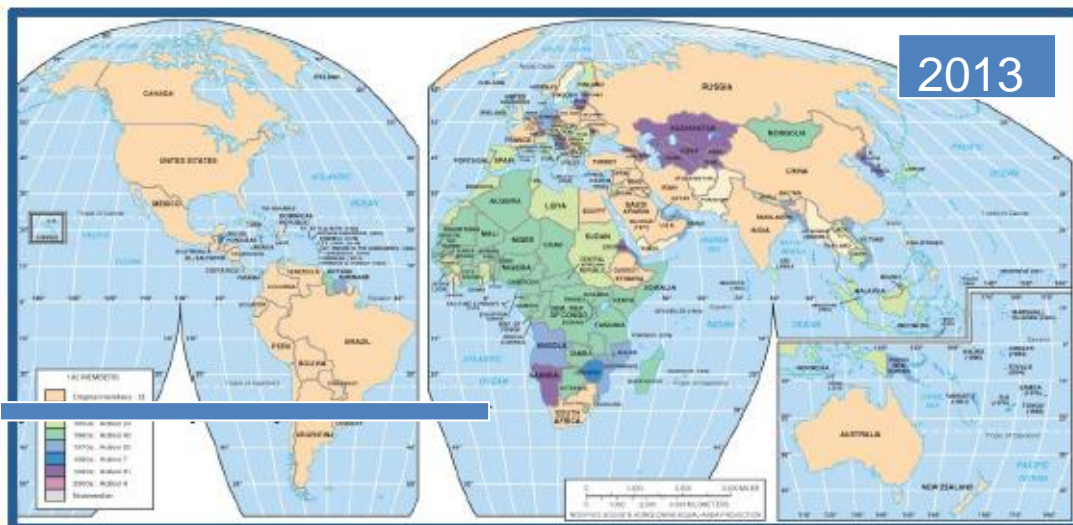
The 50 states of the U.S. are subdivisions within a single State- The United States of America

- Turn to the person next to you and brainstorm characteristics of a sovereign state.

How Many States Are There?



In the 1940s there were only about 50 States.



Now there are around 200 States.

Problems defining states...

Korea





**NORTH
KOREA**

**SOUTH
KOREA**

North vs South Korea

- 2 states?

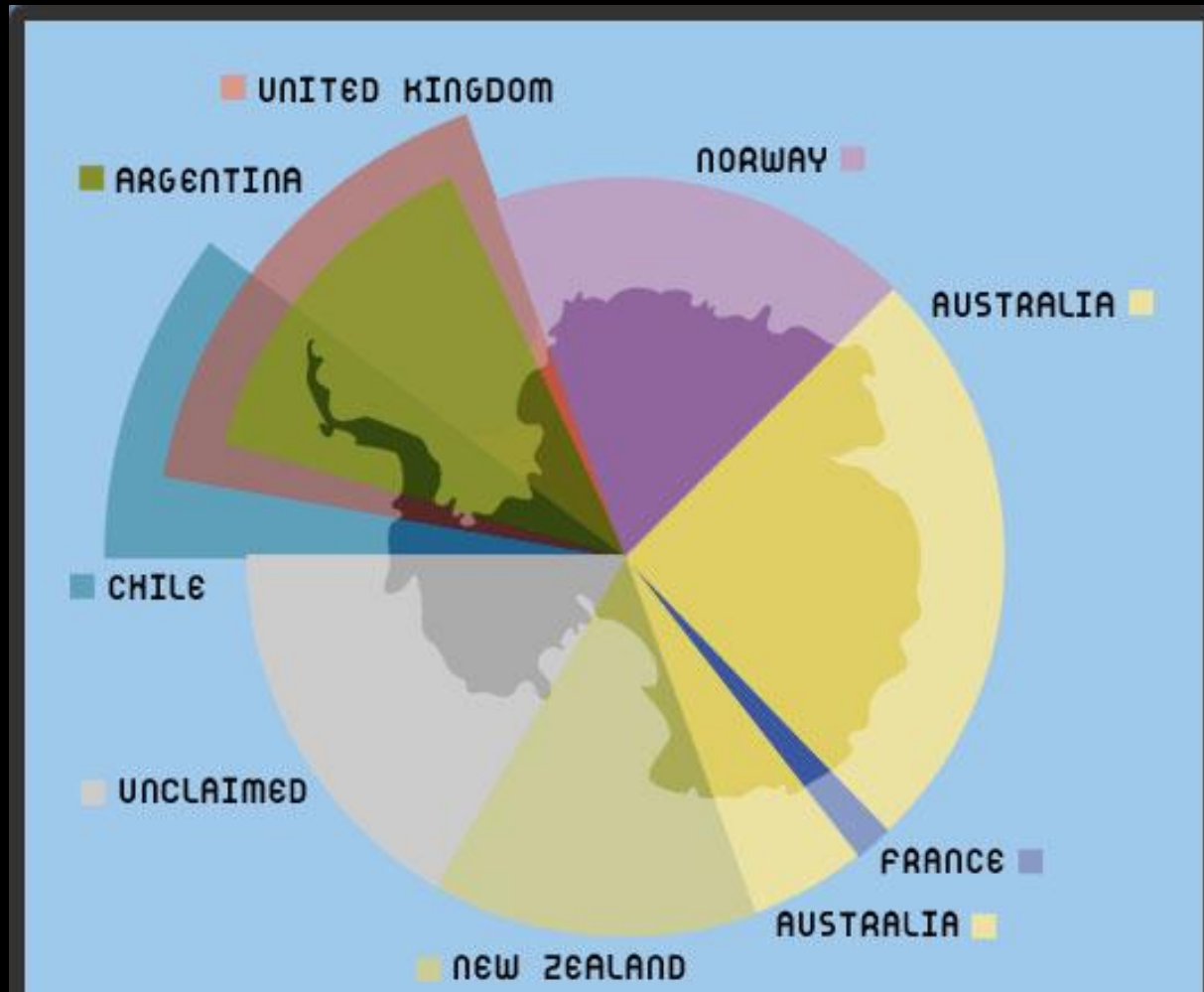
- YES!!!!

$\frac{dN}{dt d\Omega dF dz d^3p} \sim \frac{1}{(1+z)^2 \sqrt{1+2q\delta^2}}$
 $\ln[\tau(z)] \ln\left[\frac{F}{F(z)} p\right] f(z)$
 $\frac{d(\rho)}{dt} + \nabla_r \cdot (p + \frac{p v_r}{c}) \leq 0$
 $\frac{d\rho}{dt} = -\nabla_r \cdot p \sim R^3$
 $\rho = \text{MATTER DENSITY OF THE UNIVERSE}$
 $\Lambda = \text{COSMOLOGICAL CONSTANT}$
 $R_{\mu\nu} = \Lambda g_{\mu\nu}$
 $R_{\mu\nu} \propto \rho$
 $R_{\mu\nu} = \Lambda g_{\mu\nu} - \frac{1}{2} R g_{\mu\nu}$
 $\Delta t_{app} = \frac{(t_A - t_B)}{H} = \frac{1}{R}$
 $R_{\mu\nu} = \frac{1}{2} \rho g_{\mu\nu}$
 BY SETTING $T_{\mu\nu}$
 $\sqrt{EFE - \text{phot} - \text{spect}} (g)$
 $F^2 = F^2$
 THE SOLUTION IS $x = \frac{c}{g} (\cosh)$
 LENGTH CONTRACT $x_2 = x_1$
 OPEN POINT t_2
 INTERVAL APPEAR LONGER
 What if?
 - Ricci flat
 - R tensor PROPORTIONAL
 - $R_{\mu\nu} = \Lambda g_{\mu\nu}$
 - $(F^2 = F^2)$
 $\Delta t_{app} = \frac{\Delta t_{prop}}{\sqrt{1-2\delta^2}}$
 $D = \frac{1}{T}$

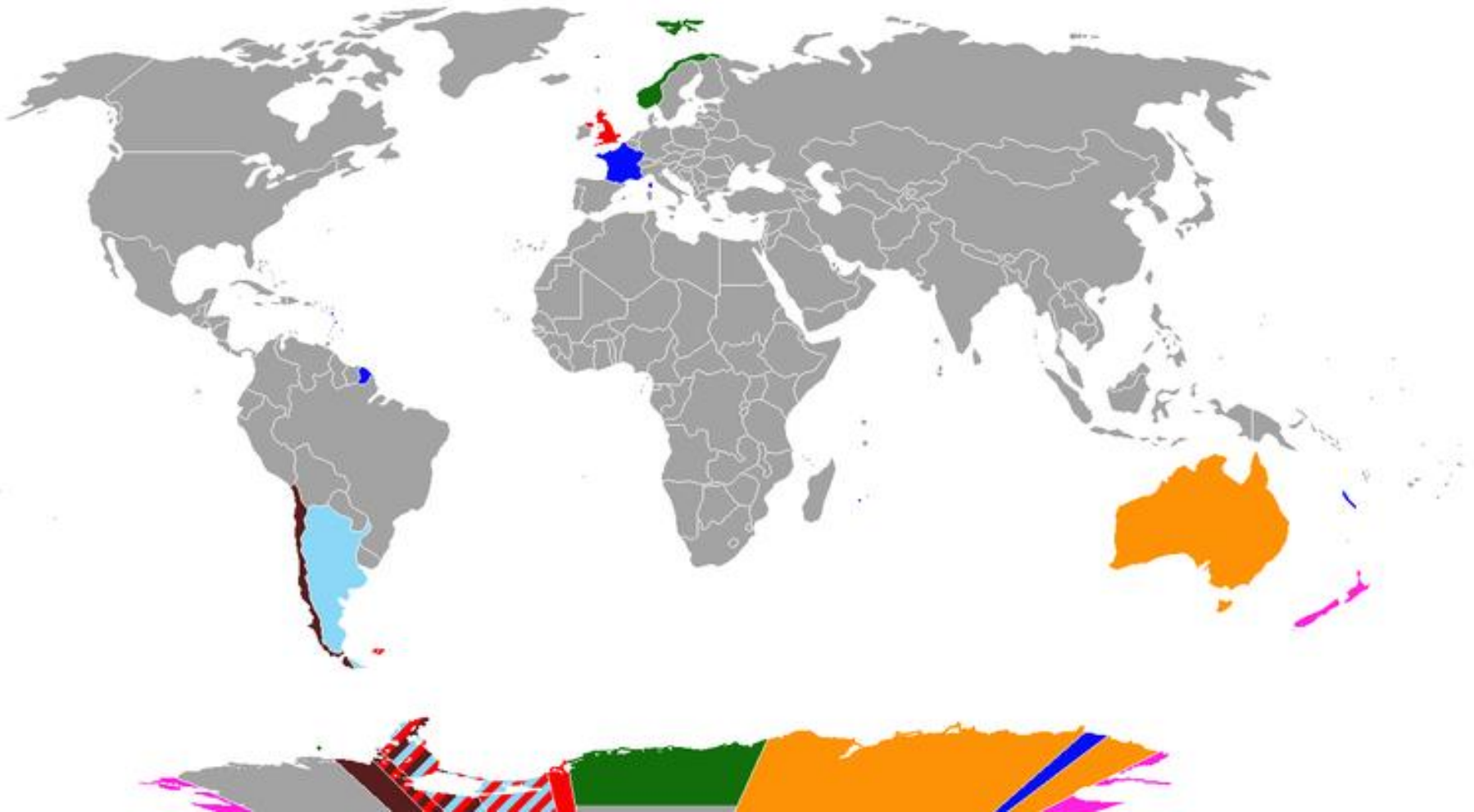
- What if the south would have won the American Civil War?
- Could two states function in the United States?

Multiple Claims for Territory Polar Regions

- South



South Pole Claims



North Pole Claims

STAKING CLAIM TO THE NORTH POLE

SPIEGEL ONLINE

The Arctic and Bordering Nations

Selected natural resources:

-  Important retreat areas for female polar bears and their offspring
-  100% proved oil/gas reserves
-  Test drilling
-  Oil and gas production
-  Gold
-  Lead
-  Copper
-  Silver
-  Zinc
-  Tin
-  Iron
-  Diamonds

Click the buttons for additional information!

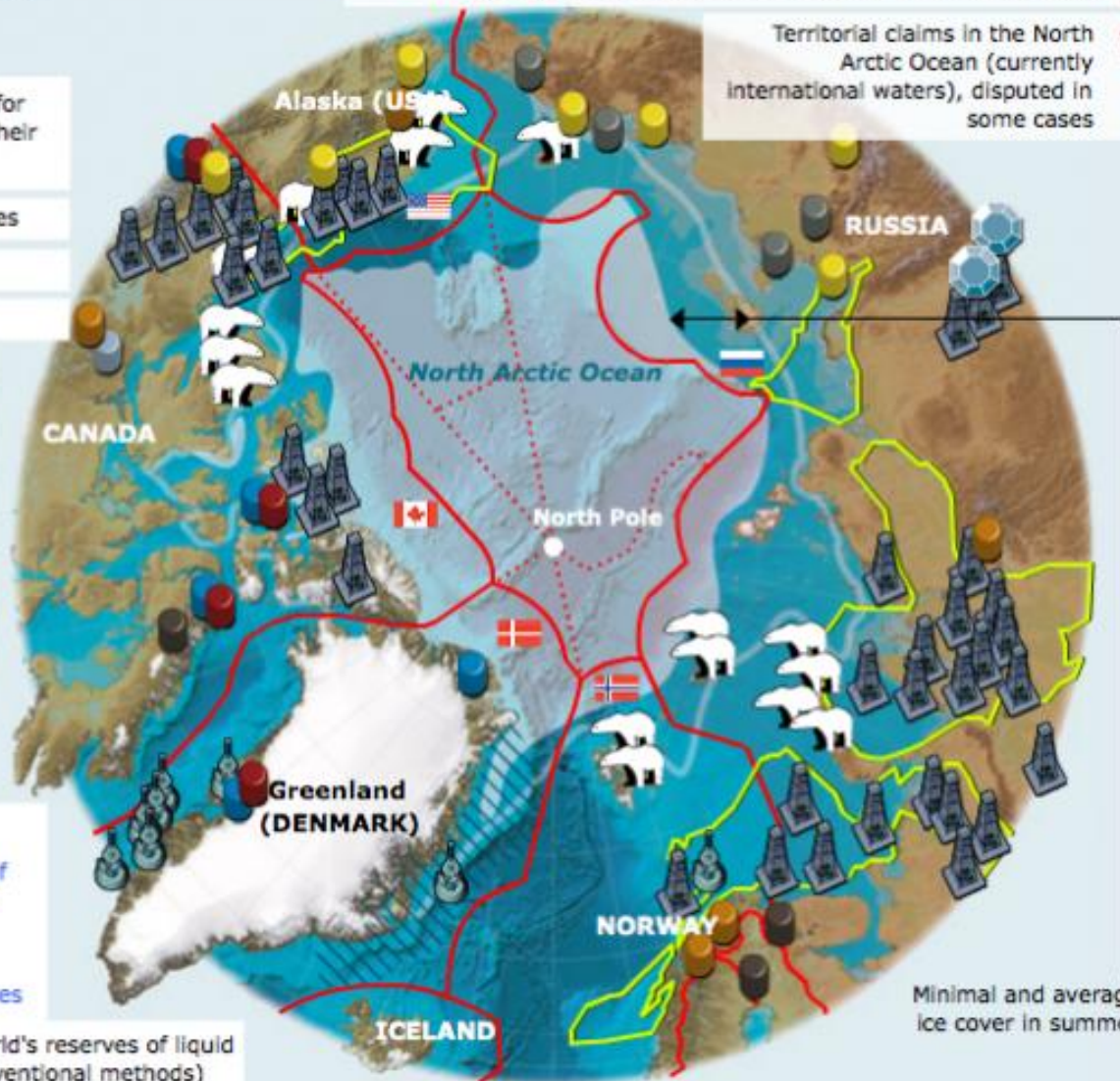
Arctic Oil and Gas Reserves

90 billion barrels of oil or	47 billion m3 of natural gas or
13%	30%
of world reserves	of world reserves

In addition, close to 20% of the world's reserves of liquid gas (so far unextractable using conventional methods)

Current national borders and 200 sea mile zone borders

Territorial claims in the North Arctic Ocean (currently international waters), disputed in some cases



Minimal and average ice cover in summer

Varying Size of States



Svalbard (Nor.)

RUSSIA



Development of the State Concept

- Many different states is recent idea.

Ancient States

City-state

Sovereign state that comprises a town and the surrounding countryside



Early European States

- Roman Empire



Thinking Check: How did we get a billion different states in Europe (ex. France, Spain, Germany, etc) when at one time all the land was under one ruler?

Colonies

- What is a Colony?
- Territory legally tied to a sovereign state rather than being completely independent

Colonialism

- Why?
- GOD, GOLD, GLORY
 1. Christianity
 2. Resources / markets
 3. Power

Colonialism

Colonialism

- Began in late 1800s
- Major Players
- Early Settlements
- Berlin Conference
- Reasons behind
 - G, G, and G



Colonialism vs. Imperialism

- Colonialism
 - Establish Settlements for Three Gs
 - Usually in unsettled or sparse settlement
 - Examples
- Imperialism
 - Controlled area of already heavily populated area
 - Examples

British Empire



Modern Impact

- Long Term Effects of Colonialism
 - Pros Vs. Cons

